

---

**EXHIBIT 18**  
**CURRENT VIEWS OF LANDFILL AND AERIAL RENDERINGS OF COFFIN BUTTE LANDFILL**

---







P:\320-000\322-142-CADD\Drawings\Exhibits\322142-Site\18-Visual\_Documentation.dwg(1) LS(10/21/2024 - jhuah) - LP 10/21/2024 2:49 PM



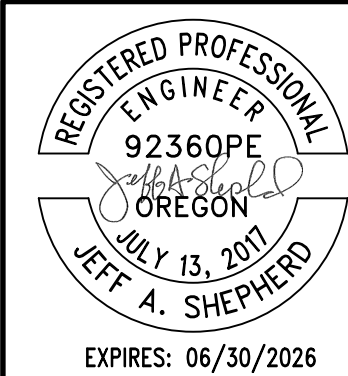
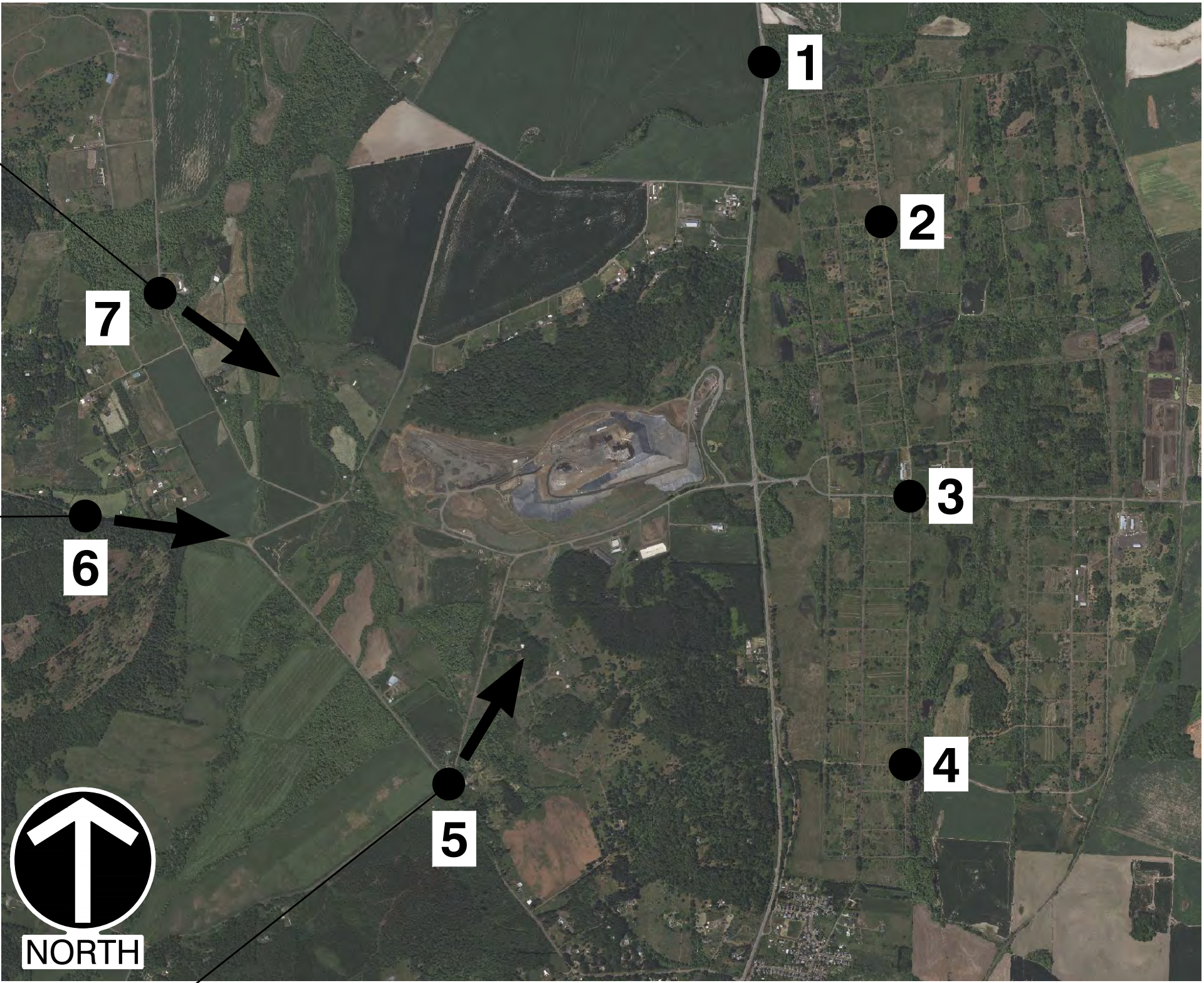
7. LOOKING SOUTHEAST TOWARDS THE LANDFILL FROM RIFLE RANGE ROAD.



6. LOOKING EAST TOWARDS THE LANDFILL FROM TAMPICO ROAD.

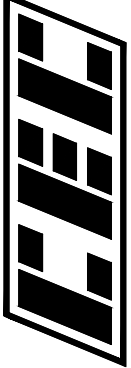


5. LOOKING NORTHEAST TOWARDS THE LANDFILL FROM INTERSECTION OF TAMPICO ROAD AND NW SOAP CREEK ROAD.



REVISION RECORD

NO	DATE	DESCRIPTION



Civil & Environmental Consultants, Inc.  
11811 N. Tatum Blvd., Suite 3057 - Phoenix, AZ 85028  
Ph: 602.760.2324 · 877.231.2324 · Fax: 602.760.2330  
www.cecinc.com

VALLEY LANDFILLS, INC.  
COFFIN BUTTE LANDFILL  
CONDITIONAL USE PERMIT  
APPLICATION  
CORVALLIS, OR 97330

EXHIBIT 18 - VISUAL DOCUMENTATION OF  
LANDFILL VIEWS

DATE:	JULY 2024	DRAWN BY:	JAS
DWG SCALE:	AS SHOWN	CHECKED BY:	JAS
PROJECT NO:	322-142	APPROVED BY:	JAS

DRAWING NO.:  
**B**



# Artist renderings of Coffin Butte Landfill (with Proposed Expansion)



Build-out of Coffin Butte Landfill, with approved expansion



# 1. Northwest view towards the landfill from Pacific Highway (99 W)

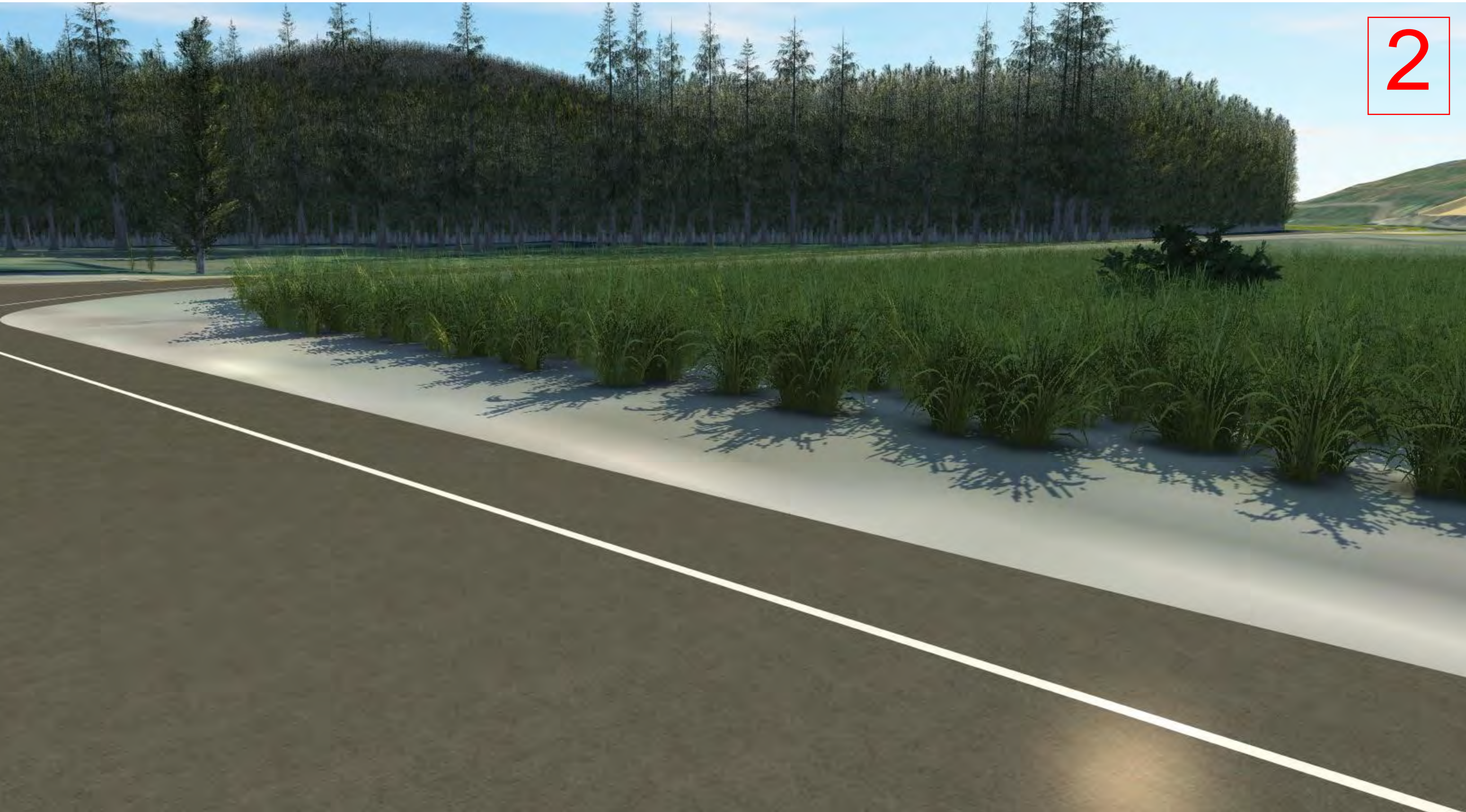


Build-out of Coffin Butte Landfill, with approved expansion.



## 2. Southwest view towards the landfill from Pacific Highway (99 W)

2

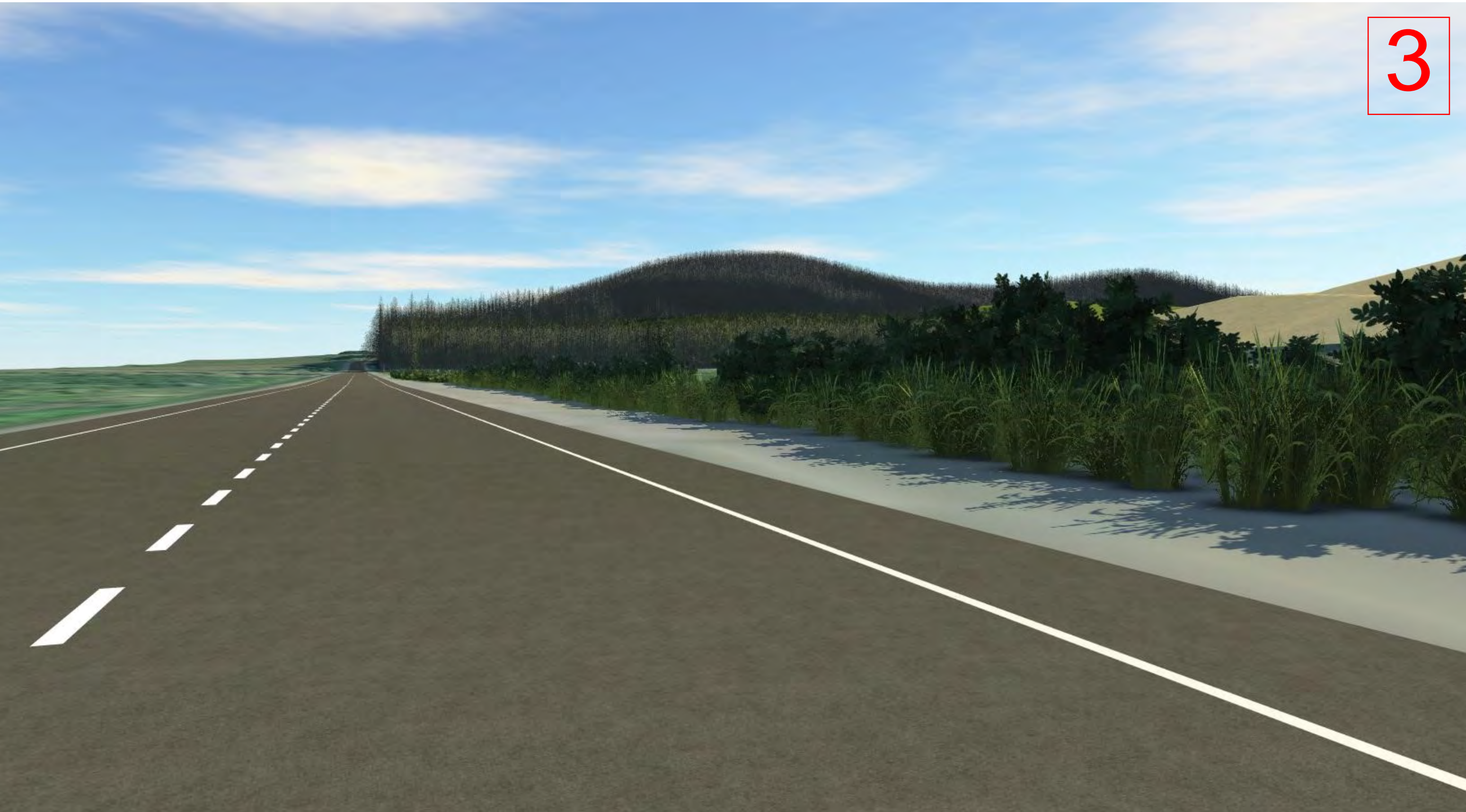


Build-out of Coffin Butte Landfill, with approved expansion.



### 3. Southwest view towards the landfill from Pacific Highway (99 W)

3

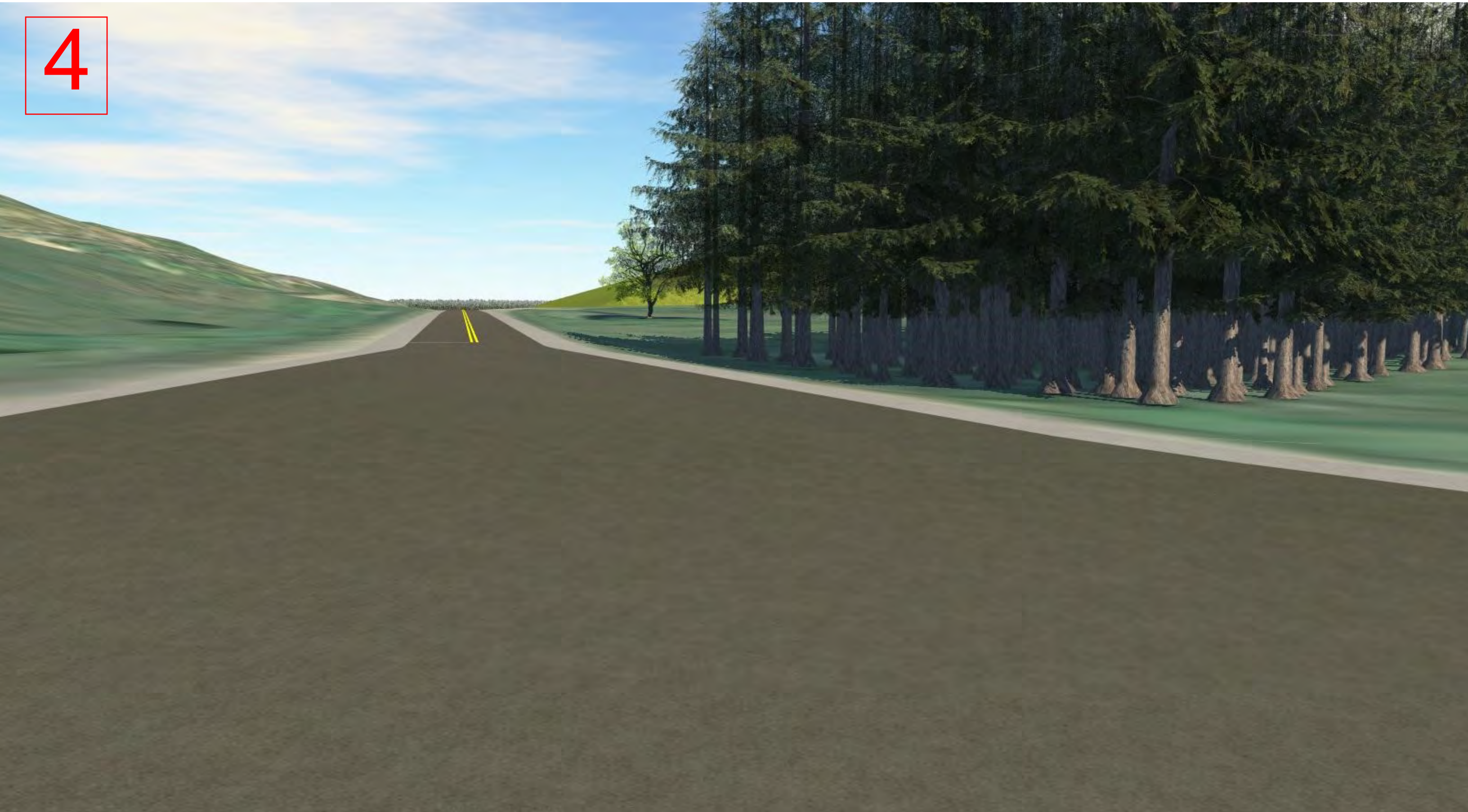


Build-out of Coffin Butte Landfill, with approved expansion.



#### 4. Southwest view towards the landfill from Coffin Butte Rd

4



Build-out of Coffin Butte Landfill, with approved expansion.